



PageGate Client Version 7 Documentation

© 2014 NotePage, Inc.

PageGate Client Version 7 Documentation

© 2014 NotePage, Inc.

All rights reserved. No parts of this work may be reproduced in any form or by any means - graphic, electronic, or mechanical, including photocopying, recording, taping, or information storage and retrieval systems - without the written permission of the publisher.

Products that are referred to in this document may be either trademarks and/or registered trademarks of the respective owners. The publisher and the author make no claim to these trademarks.

While every precaution has been taken in the preparation of this document, the publisher and the author assume no responsibility for errors or omissions, or for damages resulting from the use of information contained in this document or from the use of programs and source code that may accompany it. In no event shall the publisher and the author be liable for any loss of profit or any other commercial damage caused or alleged to have been caused directly or indirectly by this document.

Publisher

NotePage, Inc.

Technical Editors

Chris Housley

Jeremy Burke-Hartman

Table of Contents

Foreword	0
Part I PageGate GUI Client	4
1 Overview	4
2 Configuring the PageGate Client	4
3 Using the GUI Client	5
File	7
Display Options	9
Tools	10
Filter Recipients	10
Presets	11
Local Recipients	13
View	14
Pending	14
Sent	15
Bad	16
Scheduled	16
History	17
Local and Network Recipients	18
Reports	19
Sent Messages	19
By Recipient	20
By Date/Time	20
Scheduled Messages	21
Scheduling Messages	21
Index	0

1 PageGate GUI Client

PageGate GUI Client

[Next](#)

The PageGate GUI (Graphical User Interface) Client is the Windows based graphical client for the PageGate Paging application. It allows workstations on a network to send messages to the PageGate paging server, which in turn delivers the messages (via a modem, a direct cable connection, or the internet) to your paging carrier(s) for delivery. Your paging carrier will then send the message to the appropriate pager, phone, or wireless messaging device. The PageGate GUI Client program is one of several front-end interfaces available for the PageGate paging server. It can be used alone, or in conjunction with any or all of the other interfaces.

The PageGate server application must be installed and configured before the PageGate GUI Client can be used. Please refer to the PageGate Server's help file for more information on the installation, configuration, and operation of the PageGate Server.

1.1 Overview

Overview

[Top](#) [Previous](#) [Next](#)

The PageGate GUI (Graphical User Interface) Client is the visual interface for the PageGate Server. It allows workstations on a network to send messages to the PageGate Server, which in turn delivers the messages to your paging carrier(s) for delivery. Your paging carrier will then send the message to the appropriate pager, phone, or wireless messaging device. The PageGate GUI Client program is one of several front-end interfaces available for the PageGate paging server. It can be used alone, or in conjunction with any or all of the other interfaces.

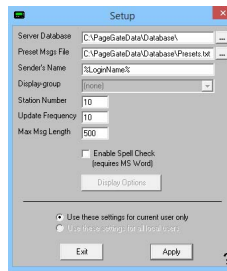
The PageGate server application must be installed and configured before the PageGate GUI Client can be used. Please refer to the PageGate Server's help file for more information on the installation, configuration, and operation of the PageGate Server.

1.2 Configuring the PageGate Client

Configuring the PageGate Client

[Top](#) [Previous](#) [Next](#)

The very first time you run the PageGate Client, you will be prompted for some information:

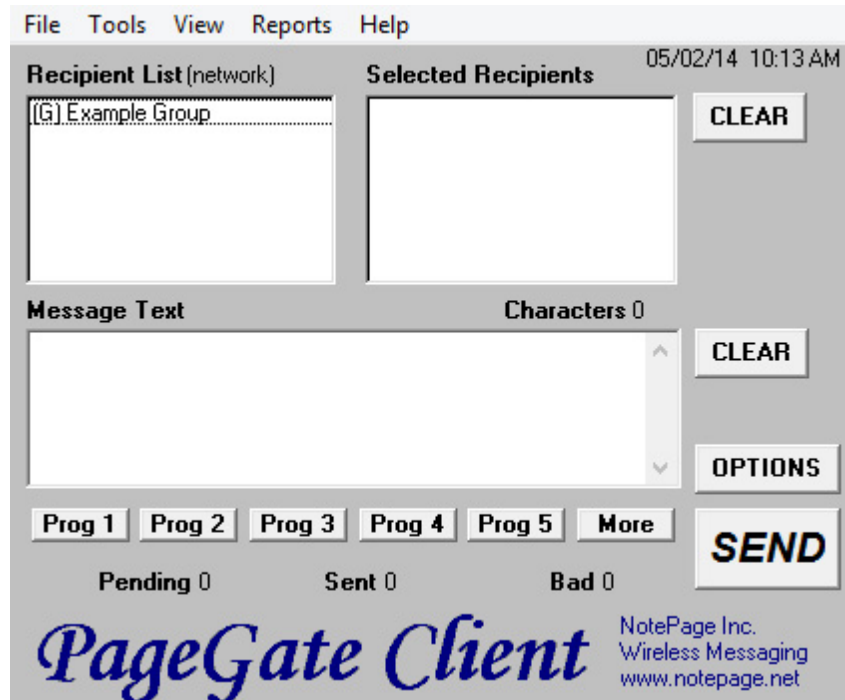


Setting	Function
Server Database	This should be the path to the PageGate Server's Database. This can be either a local path (if you're running the GUI Client on the same system as the PageGate Server) or a network path.
Preset Msgs File	If you have configured any preset messages, this should be the path to the Preset messages. This can either be a local path or a network path.
Sender's Name	By default, this field is set to %LoginName% - This value will use the username of whoever is currently logged into Windows as the Sender's Name messages sent from the GUI Client. This field can also be set to a static value such as Tech, Sales, Jeremy, Lamar, etc.
Display-group	This option cannot be configured on initial setup.
Station Number	The Station Number is a unique identifying number for this GUI Client and allows the PageGate Admin to track how many messages this instance of the GUI Client has sent and to whom the messages were sent. If you are performing multiple GUI Client installations, make sure that no two installations of the GUI Client have the same Station Number.
Update Frequency	This field determines how often (in seconds) the GUI Client posts data to the PageGate Database.
Max Msg Length	This field determines how many characters can be typed in the Message field of the GUI Client.
Enable Spell Check	By enabling this option, the GUI Client will automatically spellcheck any messages typed. This option requires MS Word to be installed.
Display Options	This field cannot be configured on initial setup.
Use these settings for current user only	Set this option if each Windows User needs to have their own copy of the GUI Client configured.
Use these settings for all local users	Set this option if you want these settings to be saved for all Windows Users who log in to this workstation.

1.3 Using the GUI Client

Using the GUI Client

[Top](#) [Previous](#) [Next](#)



The PageGate GUI Client is used for scheduling and sending messages to the PageGate Server's list of Recipients and Groups. It shows a list of available Recipients and Groups and is highly customizable.

The PageGate Client can be run from the paging server or on any workstation that has network access to the PageGate Database.

Recipients can be moved to the Selected Recipients column simply by clicking on their name.

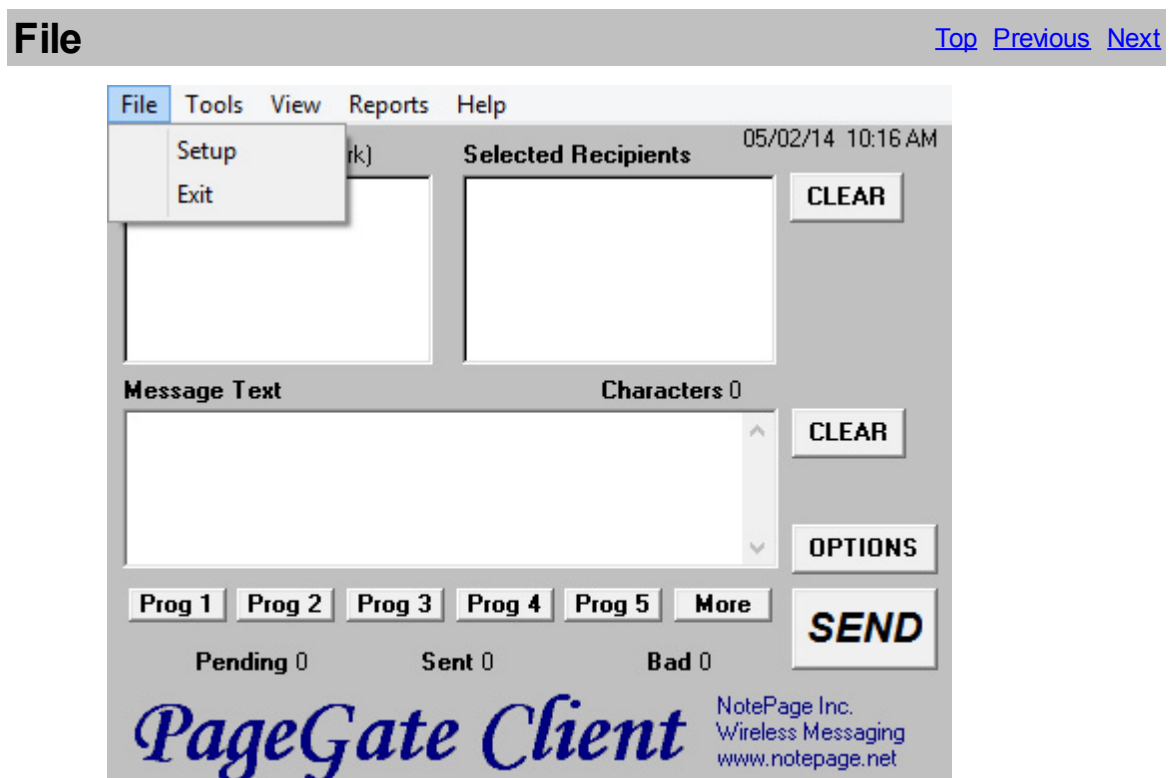
The Message Text field is where you type the message you want to send.

As shown above, there are many buttons and options within the program.

First are the menus:

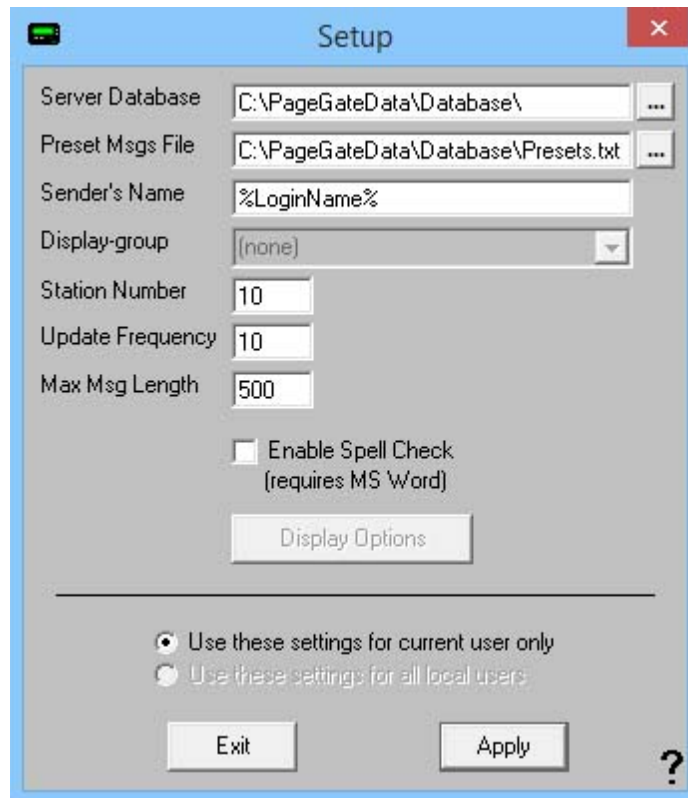
- [File](#)
- [Tools](#)
- [View](#)
- [Reports](#)
- Help

1.3.1 File



The two options under the File menu are Setup and Exit. Selecting the Exit option will close the GUI Client. Selecting Setup will allow you to modify the base settings of the current installation of the GUI Client.

When selecting the Setup option, you will be presented with the following options menu:



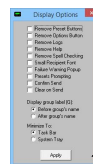
Setting	Function
Server Database	This should be the path to the PageGate Server's Database. This can be either a local path (if you're running the GUI Client on the same system as the PageGate Server) or a network path.
Preset Msgs File	If you have configured any preset messages, this should be the path to the Preset messages. This can either be a local path or a network path.
Sender's Name	By default, this field is set to %LoginName% - This value will use the username of whoever is currently logged into Windows as the Sender's Name messages sent from the GUI Client. This field can also be set to a static value such as Tech, Sales, Jeremy, Lamar, etc.
Display-group	If you have configured any Display Groups for the PageGate Server, you can specify the Display Group this installation of the GUI Client is locked to. By selecting a Display Group, this installation of the GUI Client will only list those recipients that are members of the Display Group.
Station Number	The Station Number is a unique identifying number for this GUI Client and allows the PageGate Admin to track how many messages this instance of the GUI Client has sent and to whom the messages were sent. If you are performing multiple GUI Client installations, make sure that no two installations of the GUI Client have the same Station Number.
Update Frequency	This field determines how often (in seconds) the GUI Client posts data to the PageGate Database.
Max Msg Length	This field determines how many characters can be typed in the

	Message field of the GUI Client.
Enable Spell Check	By enabling this option, the GUI Client will automatically spellcheck any messages typed. This option requires MS Word to be installed.
Display Options	Click on this button to view the Display Options .
Use these settings for current user only	Set this option if each Windows User needs to have their own copy of the GUI Client configured.
Use these settings for all local users	Set this option if you want these settings to be saved for all Windows Users who log in to this workstation.

1.3.1.1 Display Options

Display Options

[Top](#) [Previous](#) [Next](#)



Setting	Function
Remove Preset Buttons	Enabling this will remove the Prog1, Prog2, Prog3, Prog4, Prog5, and More buttons.
Remove Options Button	Enabling this will remove the Options button.
Remove Logs	Enabling this will remove the ability of this GUI Client to view any log files.
Remove Help	Enabling this will remove the Help menu.
Remove Spell Checking	Enabling this will remove the Spell Checking function of this GUI Client.
Small Recipient Font	Enabling this will display the recipient and selected recipient lists in a smaller font.
Failure Warning Popup	When this is enabled, every time a message fails, you will be notified by a popup window.
Presets Prompting	For this setting to function properly, you must first configure a set of preset messages in the PageFate client. Next, set up one of the first nine presets with a recipient but no message. If that has been done and this option is enabled, if you click on the visible preset button, a pop-up will list all of the possible preset messages for that recipient. This allows a user to click a preset for a recipient and choose a commonly used message for them.
Confirm Send	When this is enabled, every time the Send button is clicked, you will be prompted to confirm the delivery of the message.
Clear on Send	When this option is enabled, the Message and Selected Recipient portions of this GUI Client are cleared after the Send button is clicked.
Display group label (G)	You can choose to have the (G) for Group label appear before or after your groups' names. If the (G) appears before, the groups will automatically be sorted to the top of the Recipient list. If the (G) appears after, the groups will be sorted by the first letter in the group name.
Minimize To	You can choose to have the GUI Client minimize to the Task Bar or the System Tray. If the GUI Client is set to minimize to the Task Bar, you will see it to the right of the Start Menu when the program is

	minimized. When the program is set to minimize to the System Tray, it will appear as an icon of a pager next to the clock in the lower right hand corner of the screen.
--	---

1.3.2 Tools

Tools

[Top](#) [Previous](#) [Next](#)

The Tools Menu of the GUI Client will display the following options:



- [Filter Recipients](#)
- [Presets](#)
- [Local Recipients](#)
- Check Spelling.

Note: The Check Spelling option will not work if you don't have Microsoft Word installed.

1.3.2.1 Filter Recipients

Filter Recipients

[Top](#) [Previous](#) [Next](#)

By using the Filter Recipients option, you can filter the list of recipients that is shown in the 'Recipient List'. You can filter recipients by full name (the name that is displayed in the 'Recipient List'), by short name (the name used by the Admin program), or by any of for other user definable fields (these are setup within the Admin program).

In each field, enter characters that must match each recipient to be included in the list.

To return to the full list, leave all the filter fields blank, or click on the 'Clear' button next to the recipient list

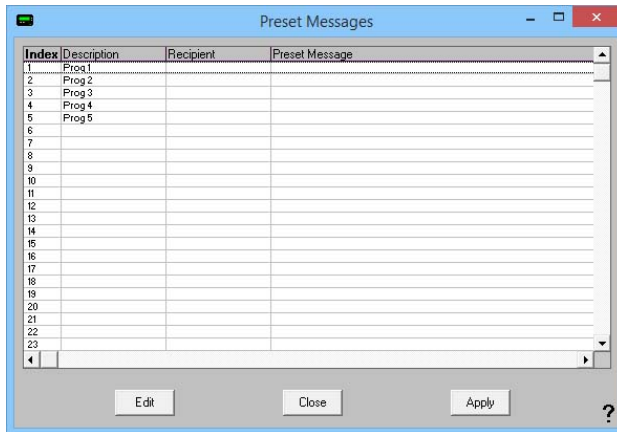
Setting	Function
Full Name	This field requires the Full Name field of a recipient in the PageGate Admin to match the pattern you enter here. For example, to have only those recipients whose Full Name field begins with Tech show in the recipient list, you would enter Tech here.
Short Name	This field requires the Recipient field of a recipient in the PageGate Admin to match the pattern you enter here. For example, to have only those recipients whose Recipient field begins with oncall show in the recipient list, you would enter oncall here.
Comment1 - Comment4	When creating a recipient in the PageGate Admin, you can specify certain comment fields. This field requires the Comment Field in the Recipient's Settings to match whatever you enter here.
Filter	Clicking on this button will Filter the Recipient list with your criteria.
Close	This will close this option dialog without filtering your Recipient view.

1.3.2.2 Presets

Presets

[Top](#) [Previous](#) [Next](#)

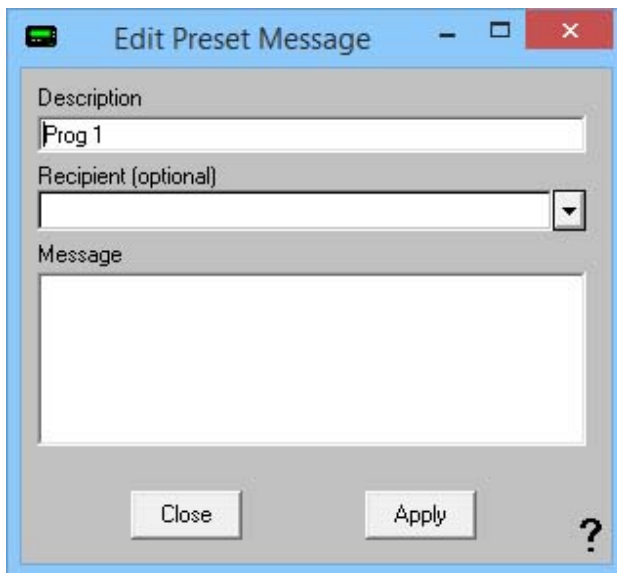
The Presets tool allows you to customize and create preset messages that will go to a recipient, group, or list of recipients and groups. This is useful if you need 'canned' messages and don't want to have to type the same message over and over and over.



To modify an existing preset message, highlight the existing line and click on Edit.

to create a new preset message, highlight one of the blank lines and click on Edit.

When you click on Edit, you will receive this prompt:



Simply type in a Description for the preset message, select a recipient or group, then type in the preset message.

Click on Apply and the preset message will be saved.

Click on Close and the settings will not be saved.

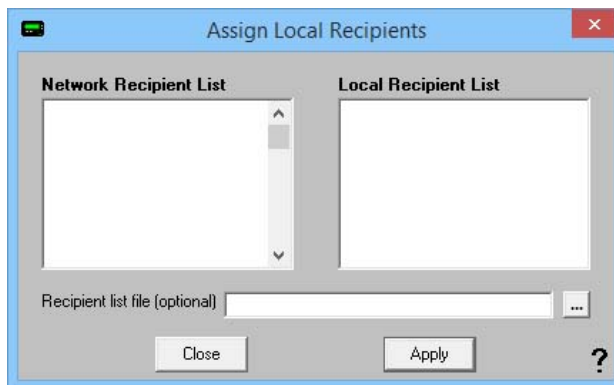
1.3.2.3 Local Recipients

Local Recipients

[Top](#) [Previous](#) [Next](#)

NOTE: If you have a local recipient list setup, it will be the default recipient list displayed each time you startup the PageGate GUI Client.

In the PageGate GUI Client, you can select several commonly used recipients and put them into a local (personal) recipient list. This can save you from scrolling through a long network recipient list to select your most commonly used recipients. This local recipient list is unique to each PageGate GUI Client.



The left column shows all recipients available to this installation of the GUI Client. The right box shows which recipients will be displayed in your local recipient list.

All you have to do is click on a recipient's name in the 'Network Recipient List' to move them to the 'Local Recipient List'.

To remove someone from the Local Recipient List, click on the recipient's name under the Local Recipient List column.

The 'Recipient List File' field can be used to centralize local recipient lists for multiple workstations. This option allows an administrator to keep a list of local recipients for this PageGate GUI Client in a central location. This enables the administrator to maintain local user list files in a central location. The file is a simple Ascii text file with a single recipient name on each line of the file.

1.3.3 View

View

[Top](#) [Previous](#) [Next](#)

The View Menu of the GUI Client will display the following options:



- [Pending](#)
- [Sent](#)
- [Bad](#)
- [Scheduled](#)
- [History](#)
- [Local Recipients](#)
- [Network Recipients](#)

1.3.3.1 Pending

Pending

[Top](#) [Previous](#) [Next](#)

The Pending option of View will show you all messages this GUI Client has scheduled that are waiting to be delivered.



Requested	This column displays the Date and Time at which the pending message was scheduled.
Sent To	This column displays to whom the message was intended.

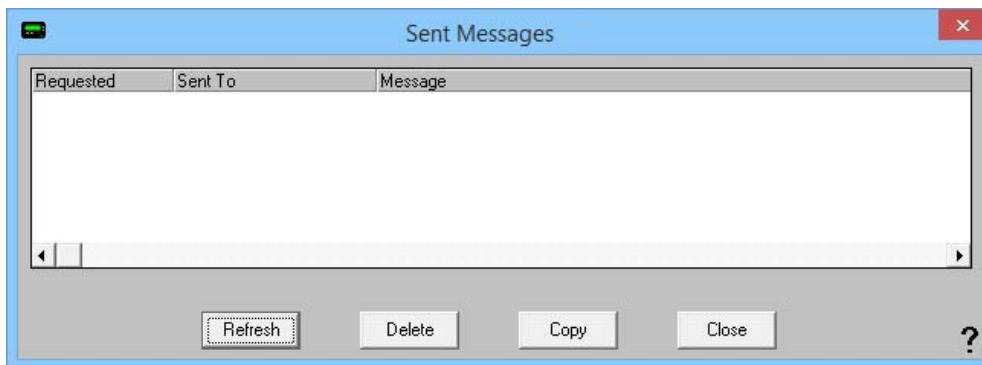
Message	This column displays the message intended for the recipient.
Refresh	Clicking this button will refresh the list of Pending Messages. If a messages has been sent, it will be removed from this list. If a new message has been queued, it will be added to this list.
Delete	By highlighting a Pending message and clicking this button, it will cancel the pending message.
Copy	By highlighting a Pending message and clicking this button, you will be taken back to the main GUI Client interface, the message will be inserted into the Message section and the Selected Recipients will be moved.
Close	This button closes the Pending Messages view.

1.3.3.2 Sent

Sent

[Top](#) [Previous](#) [Next](#)

The Sent option of View will show you all messages this GUI Client has successfully sent.

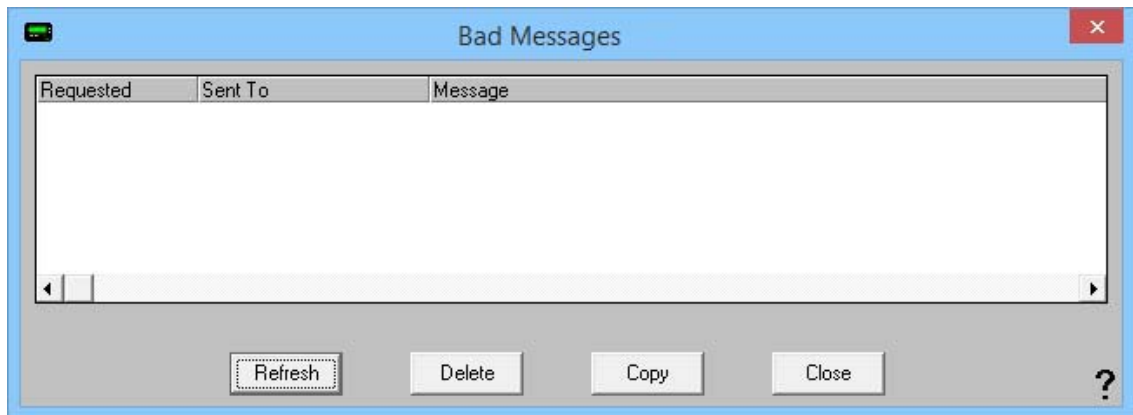


Sent	This column displays the Date and Time at which the message was sent.
Sent To	This column displays to whom the message was intended.
Message	This column displays the message sent to the recipient.
Refresh	Clicking this button will refresh the list of Sent Messages. If a new message has been sent, it will be added to this list.
Requeue	By highlighting an existing Sent message and clicking this button, that message will be re-sent to the recipient.
Copy	By highlighting a Sent message and clicking this button, you will be taken back to the main GUI Client interface, the message will be inserted into the Message section and the Selected Recipients will be moved.
Close	This button closes the Sent Messages view.

1.3.3.3 Bad

Bad[Top](#) [Previous](#) [Next](#)

The Bad option of View will show you all messages this GUI Client has failed to send.



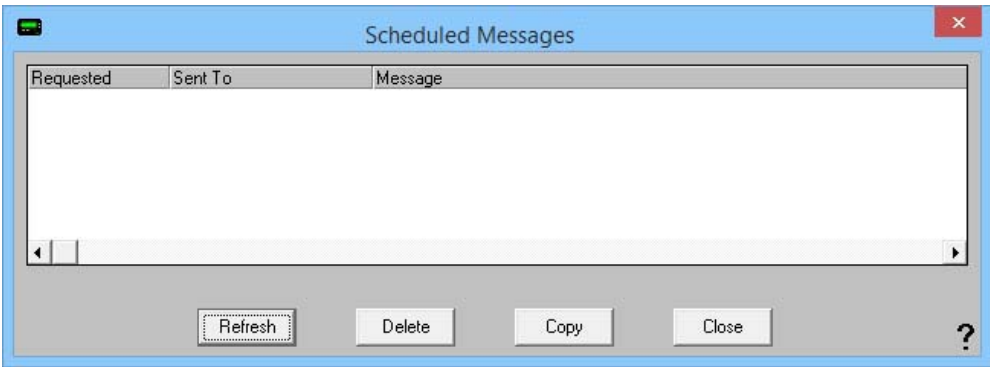
Requested	This column displays the Date and Time at which the message failed..
Sent To	This column displays to whom the message was intended.
Message	This column displays the message intended for the recipient.
Refresh	Clicking this button will refresh the list of Bad Messages. If a new message has failed to be delivered, it will be added to this list.
Requeue	By highlighting an existing Bad message and clicking this button, that message will be re-sent to the recipient.
Copy	By highlighting a Bad message and clicking this button, you will be taken back to the main GUI Client interface, the message will be inserted into the Message section and the Selected Recipients will be moved.
Close	This button closes the Bad Messages view.

1.3.3.4 Scheduled

Scheduled[Top](#) [Previous](#) [Next](#)

The Scheduled option of View will show you all messages this GUI Client is scheduled to send.

Scheduled messages are not Pending messages until the date and time for their delivery arrives.



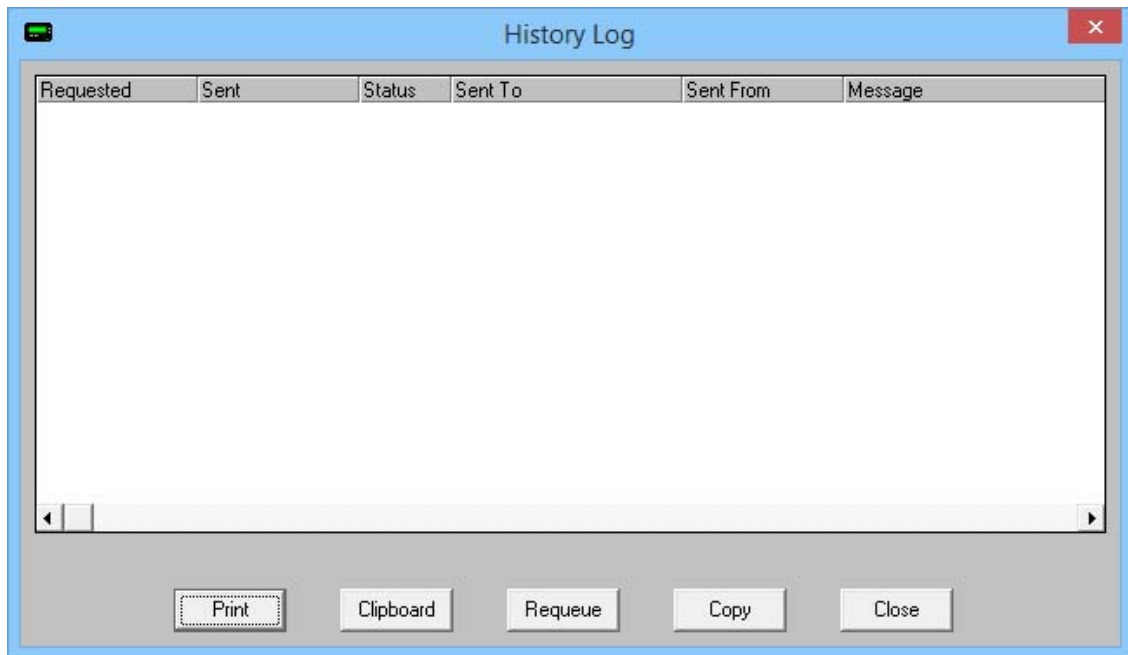
Requested	This column displays the Date and Time at which the message failed..
Sent To	This column displays to whom the message was intended.
Message	This column displays the message intended for the recipient.
Refresh	Clicking this button will refresh the list of Bad Messages. If a new message has failed to be delivered, it will be added to this list.
Requeue	By highlighting an existing Bad message and clicking this button, that message will be re-sent to the recipient.
Copy	By highlighting a Bad message and clicking this button, you will be taken back to the main GUI Client interface, the message will be inserted into the Message section and the Selected Recipients will be moved.
Close	This button closes the Bad Messages view.

1.3.3.5 History

History

[Top](#) [Previous](#) [Next](#)

The History option of View will show you all messages this GUI Client has processed.



Requested	This column displays the Date and Time at which the message failed..
Sent To	This column displays to whom the message was intended.
Message	This column displays the message intended for the recipient.
Refresh	Clicking this button will refresh the list of Bad Messages. If a new message has failed to be delivered, it will be added to this list.
Requeue	By highlighting an existing Bad message and clicking this button, that message will be re-sent to the recipient.
Copy	By highlighting a Bad message and clicking this button, you will be taken back to the main GUI Client interface, the message will be inserted into the Message section and the Selected Recipients will be moved.
Close	This button closes the Bad Messages view.

1.3.3.6 Local and Network Recipients

Local and Network Recipients

[Top](#) [Previous](#) [Next](#)

If you have configured a set of [Local Recipients](#), you can change views by selecting either option. If you want to view your Local Recipient List, click on Local Recipients. After clicking on Local Recipients, you'll notice that the recipient list says (local) next to it.

If you want to view the Network Recipient List, click on Network Recipients. After clicking on Network Recipients, you'll noticed that the Recipient List says (network) next to it.

1.3.4 Reports

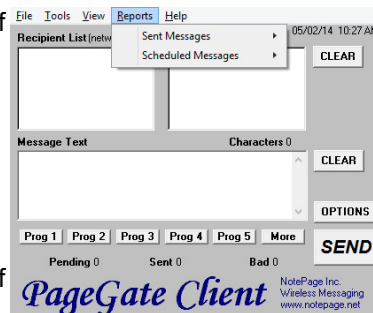
Reports

[Top](#) [Previous](#) [Next](#)

The Reports Menu of the GUI Client will allow you to run reports displaying a range of messages that meet a certain criteria.

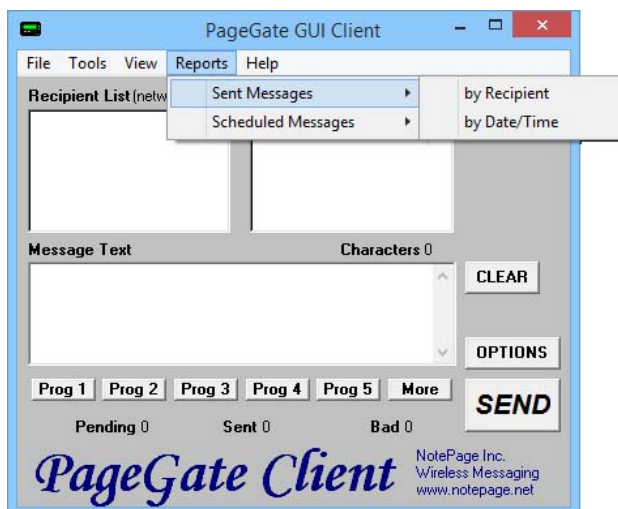
The Reports Menu of the GUI Client will display the following options:

[Sent Messages](#) and
[Scheduled Messages](#)



1.3.4.1 Sent Messages

Sent Messages

[Top](#) [Previous](#) [Next](#)

By mousing over the Sent Messages portion of the Reports menu, you'll be given the option to run a report of all sent messages [by the recipient](#) they were sent to or [by the Date and Time](#) they were sent.

By Recipient

By Recipient

[Top](#) [Previous](#) [Next](#)

Setting	Function
Recipient(s)	You can select a single recipient or group or leave the (ALL) option highlighted to run a report on all recipients and groups.
Start Date	The beginning date of the date range the report should show.
End Date	The ending date of the date range the report should show.
Start Time	The beginning time of the time range the report should show.
End Time	The beginning time of the time range the report should show.
Summary, Details, Totals Only	Summary will give a brief overview of the information requested whereas Details will include all possible information. Totals Only will only output the number of messages reported on, not giving any information about the messages themselves.
All Msgs, Good Msgs, Bad Msgs	The report show you all messages, only those messages that were sent successfully, or only those messages that failed to send.
Print Report	This option allows you to print the report to a selected printer.
Preview	When this option is enabled, before the report is actually printed, you are shown the details of the report and can choose to either close the preview, in which case nothing is printed, or print the report.
Zero Values	Enabling this option will include results that have a value of 0. This option is disabled by default.
Write report to file	When this option is enabled, the report is written to a file of your specification and name instead of queued to the printer.

By Date/Time

By Date/Time

[Top](#) [Previous](#) [Next](#)

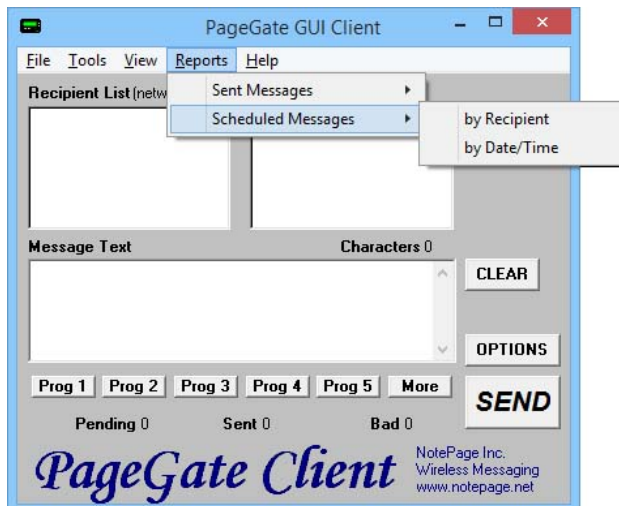
Setting	Function
Start Date	The beginning date of the date range the report should show.
End Date	The ending date of the date range the report should show.
Start Time	The beginning time of the time range the report should show.
End Time	The beginning time of the time range the report should show.
Summary, Details, Totals Only	Summary will give a brief overview of the information requested whereas Details will include all possible information. Totals Only will only output the number of messages reported on, not giving any information about the messages themselves.
All Msgs, Good Msgs, Bad Msgs	The report show you all messages, only those messages that were sent successfully, or only those messages that failed to send.
Print Report	This option allows you to print the report to a selected printer.
Preview	When this option is enabled, before the report is actually printed, you are shown the details of the report and can choose to either close the preview, in which case nothing is printed, or

	print the report.
Write report to file	When this option is enabled, the report is written to a file of your specification and name instead of queued to the printer.

1.3.4.2 Scheduled Messages

Scheduled Messages

[Top](#) [Previous](#) [Next](#)



By mousing over the Scheduled Messages portion of the Reports menu, you'll be given the option to run a report of the delivery schedule [by the recipient](#) they were sent to or [by the Date and Time](#) they were sent.

1.3.5 Scheduling Messages

Scheduling Messages

[Top](#) [Previous](#)

One of the functions of the PageGate Client is to set up a delivery schedule for messages. To do so, you would first select a recipient (or group) and type in your message. BEFORE you click the Send button, click on the Options button.

By clicking on the Options button in the PageGate GUI Client's main screen, you will be given the following prompt:

The screenshot shows a window titled "Advanced Message Options". It has a standard Windows-style title bar with a close button (X) in the top right corner. The window is divided into three main sections by horizontal lines. The first section, "Send Message When", contains a "Date" field with a calendar icon and the date "06 / 03 / 2014", and a "Time" field with "01 : 20" and a "PM" dropdown menu. The second section, "Resend Message Every", contains three empty input fields labeled "Days", "Hours", and "Minutes". The third section, "Stop Sending Message", contains a "Date" field with the date "06 / 03 / 2014" and a "Time" field with "01 : 20" and a "PM" dropdown menu. At the bottom of the window are two buttons: "Close" and "Apply".

With this prompt, you can schedule messages to automatically be sent at some point in the future. You can also determine if that message will repeat or not.

To schedule a page to be sent at a future date and time, fill in the 'Send Message When' fields.

To have the scheduled message repeat, fill in the "Resend Messages Every" fields to set the interval at which the message is resent.

Finally, fill in the 'Stop Sending Message' fields to set the date and time for the message to stop being sent.

For example, let's say that you had a message that, starting tomorrow, needed to be sent out once a day for the next month.

You would set the "Send Message When" date to tomorrow's date, set the time for whatever time the message needs to be delivered.

You would then set the "Resend message every" to 1 day OR 24 hours OR 1440 minutes.

The final step would be to set the "Stop Sending Message" date and time to exactly one month from the "Send Message When" Date.

Click on Apply, then click on the Send button. The message is now scheduled!

Endnotes 2... (after index)

Back Cover